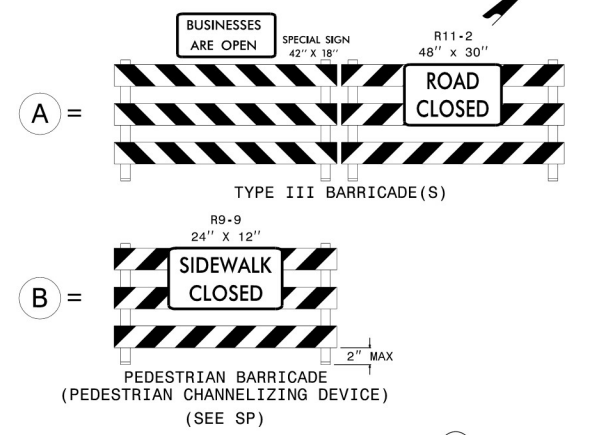
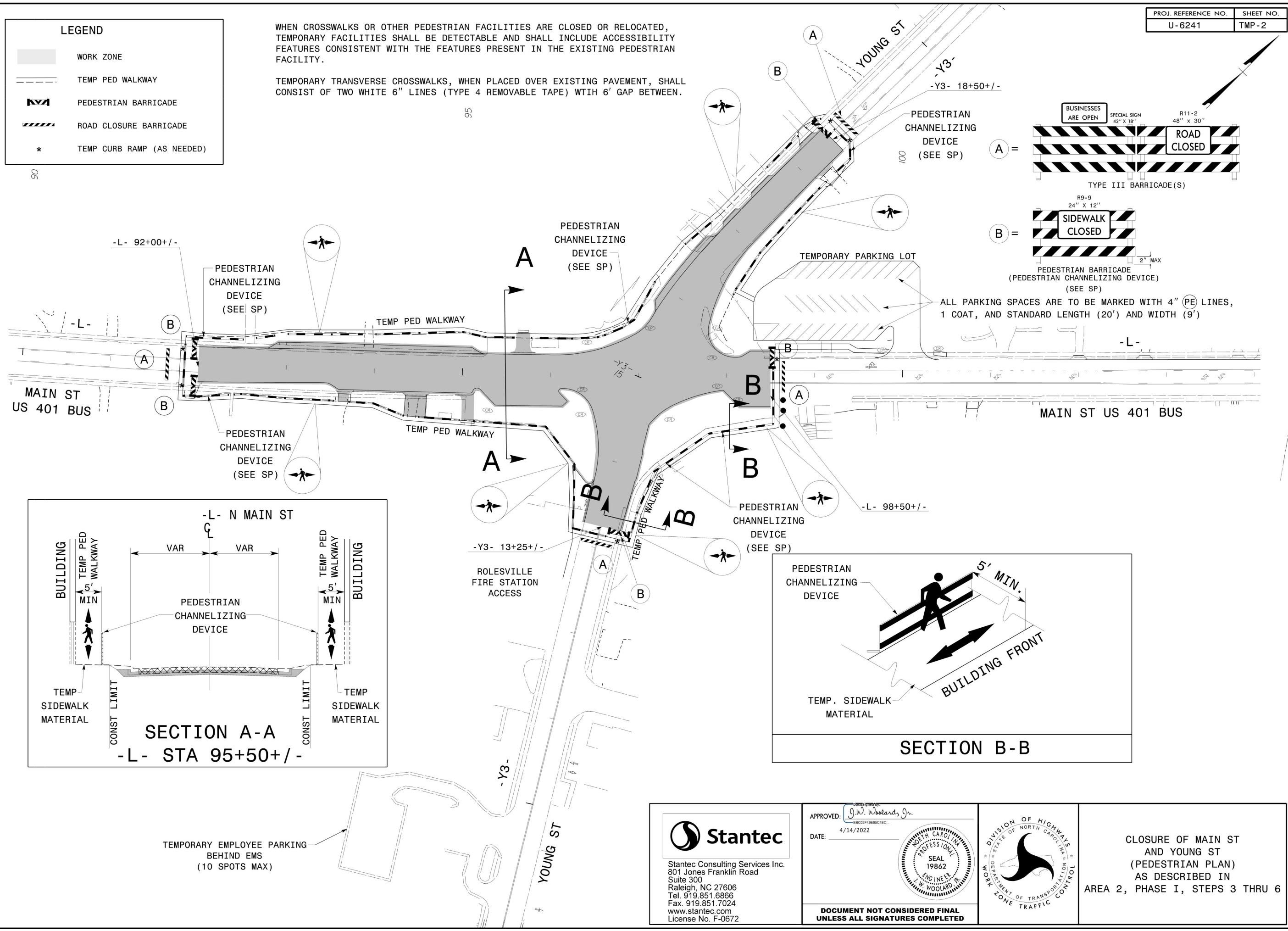


LEGEND

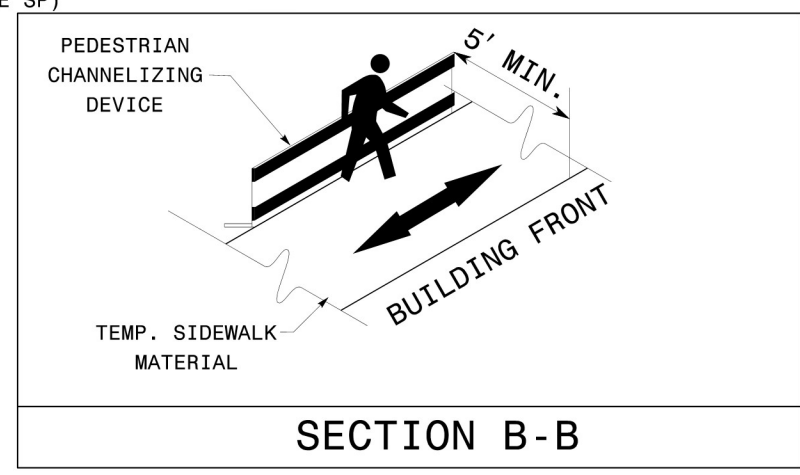
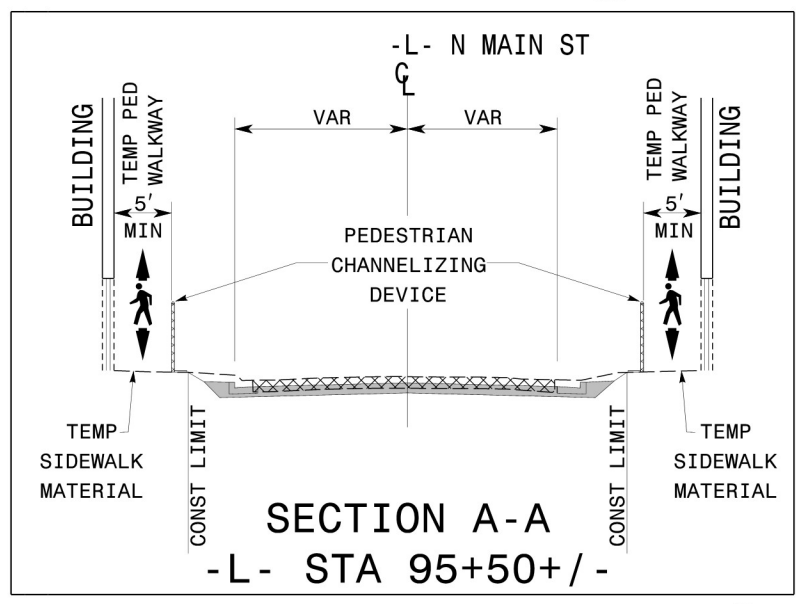
- WORK ZONE
- TEMP PED WALKWAY
- PEDESTRIAN BARRICADE
- ROAD CLOSURE BARRICADE
- TEMP CURB RAMP (AS NEEDED)

WHEN CROSSWALKS OR OTHER PEDESTRIAN FACILITIES ARE CLOSED OR RELOCATED, TEMPORARY FACILITIES SHALL BE DETECTABLE AND SHALL INCLUDE ACCESSIBILITY FEATURES CONSISTENT WITH THE FEATURES PRESENT IN THE EXISTING PEDESTRIAN FACILITY.

TEMPORARY TRANSVERSE CROSSWALKS, WHEN PLACED OVER EXISTING PAVEMENT, SHALL CONSIST OF TWO WHITE 6" LINES (TYPE 4 REMOVABLE TAPE) WITH 6' GAP BETWEEN.



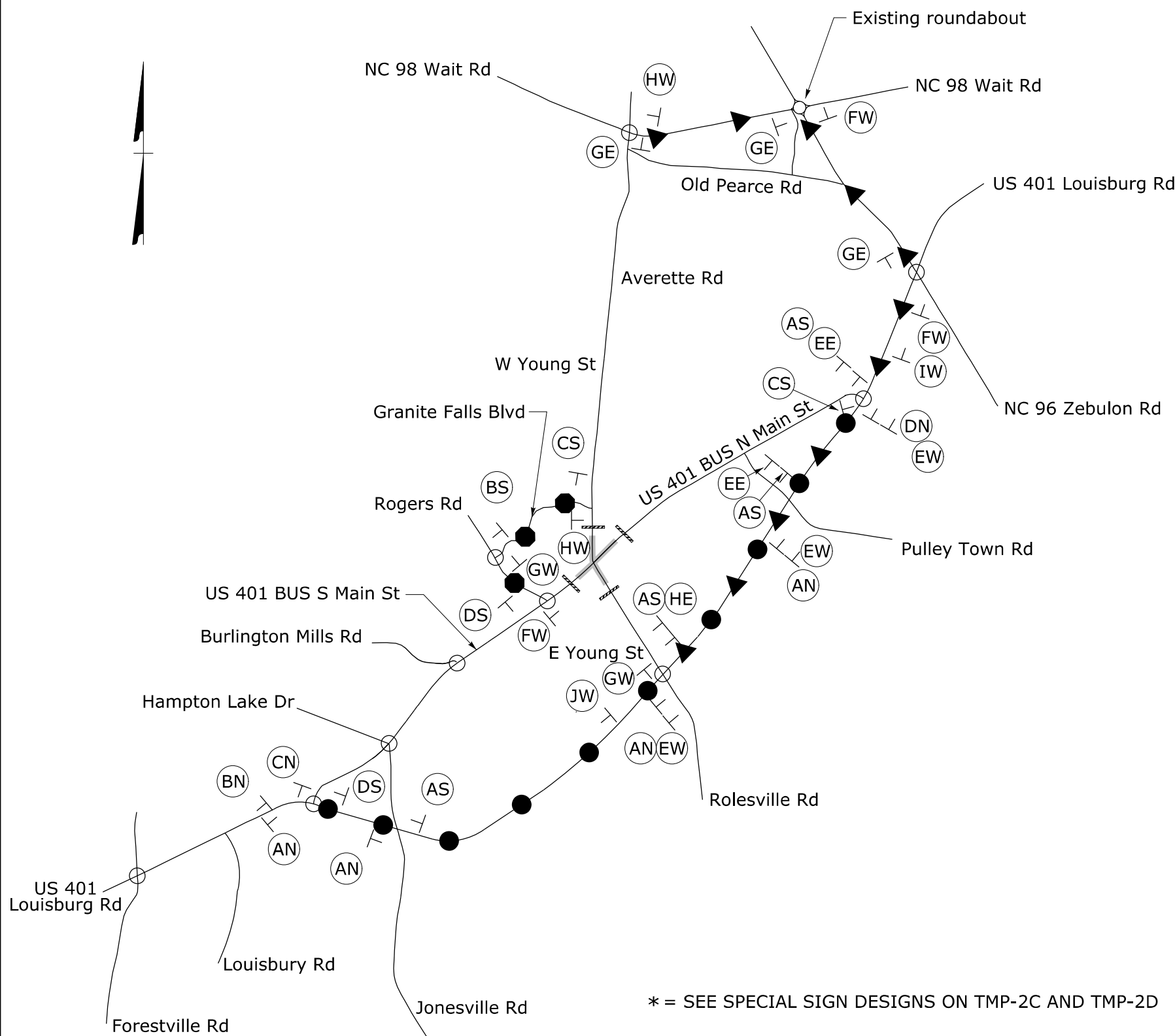
ALL PARKING SPACES ARE TO BE MARKED WITH 4" (PE) LINES, 1 COAT, AND STANDARD LENGTH (20') AND WIDTH (9')



TEMPORARY EMPLOYEE PARKING BEHIND EMS (10 SPOTS MAX)

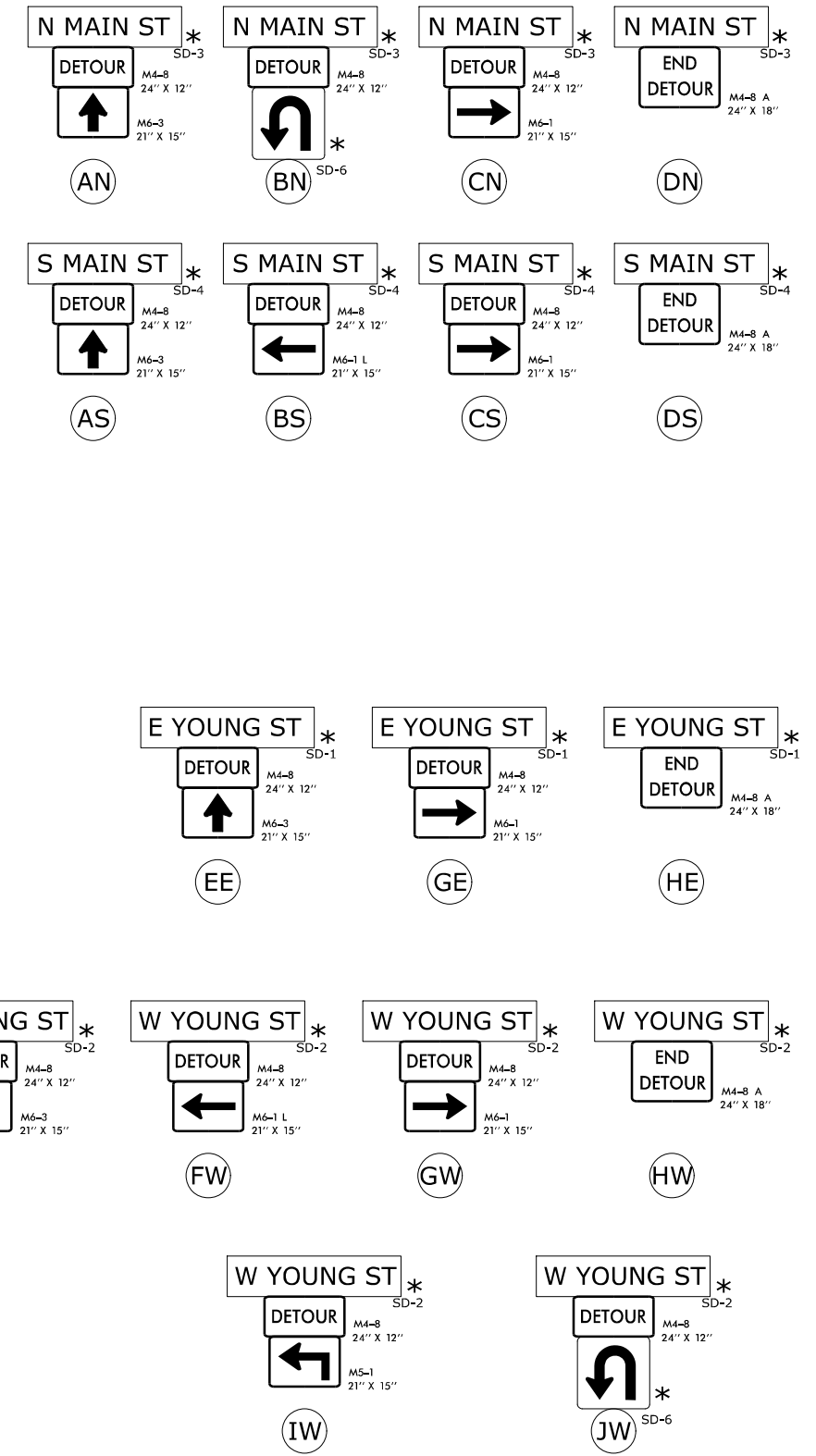
4/14/2022 User: darcie.dorland

<p>Stantec Consulting Services Inc. 801 Jones Franklin Road Suite 300 Raleigh, NC 27606 Tel. 919.851.6866 Fax. 919.851.7024 www.stantec.com License No. F-0672</p>	APPROVED: <i>J.W. Woolard, Jr.</i> DATE: 4/14/2022			CLOSURE OF MAIN ST AND YOUNG ST (PEDESTRIAN PLAN) AS DESCRIBED IN AREA 2, PHASE I, STEPS 3 THRU 6
	<p>DOCUMENT NOT CONSIDERED FINAL UNLESS ALL SIGNATURES COMPLETED</p>			



* = SEE SPECIAL SIGN DESIGNS ON TMP-2C AND TMP-2D

- US 401 BUS/Main St DETOUR ROUTE (PRIMARY ROUTE)
- US 401 BUS/Main St DETOUR ROUTE (SECONDARY ROUTE)
- ▲ Young St DETOUR
- Existing signal



SEE TMP-2B FOR ROAD CLOSURE SIGN DETAIL

4/14/2022 Us:\Traffic\Transportation Management\Plan\TCP\PLAN SHEETS\DER\U6241\TMP02A DETOUR ROUTE.dgn User:dotichardson

<p>Stantec Consulting Services Inc. 801 Jones Franklin Road Suite 300 Raleigh, NC 27606 Tel. 919.851.6866 Fax. 919.851.7024 www.stantec.com License No. F-0672</p>	<p>APPROVED: <i>J.W. Woolard, Jr.</i> DATE: 4/14/2022</p>			<h2>DETOUR ROUTE</h2>
	<p>DOCUMENT NOT CONSIDERED FINAL UNLESS ALL SIGNATURES COMPLETED</p>			